

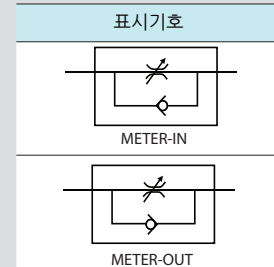
SC/SCS Series



SC



SCS



형식 기호

SC 01 06 -

① ② ③ ④

① 시리즈

SC	L자형 원터치 피팅 내장 스피드 컨트롤러
SCS	일자형 원터치 피팅 내장 스피드 컨트롤러

② 관접속구경

METRIC 적용	M5	M5×0.8	G(PF)적용	G01	G 1/8
R(PT)적용	01	R(PT)1/8		G02	G 1/4
	02	R(PT)1/4	G03	G 3/8	
	03	R(PT)3/8	UNF적용	G04	G 1/2
				U	10-32UNF
04	R(PT)1/2	NPT적용	N1	NPT 1/8	
			N2	NPT 1/4	
			N3	NPT 3/8	
			N4	NPT 1/2	

③ 적용튜브외경

mm 적용		Inch 적용	
03	3Ø TUBE	1/8	Ø1/8
04	4Ø TUBE	5/32	Ø5/32
06	6Ø TUBE	3/16	Ø3/16
08	8Ø TUBE	1/4	Ø1/4
10	10Ø TUBE	5/16	Ø5/16
12	12Ø TUBE	3/8	Ø3/8
		1/2	Ø1/2

④ 제어방식

무기호	메타-아웃(검정):표준
IN	메타-인(녹색)

사양

사용유체	공기(기타가스나 액체 사용불가)
사용압력	0~9.9kgf/cm ² (0.99MPa) 적용튜브와의 조합에 있어서 튜브의 최고사용압력에 의거합니다.
부압	-750mmHg(10Torr)
사용온도 범위	0~60℃
사용호스 종류	폴리우레탄, 나이론

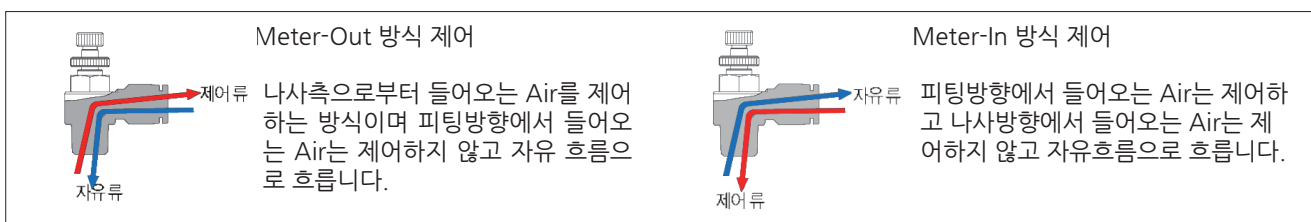
용도

- 공기압용 구동기기의 속도 제어에 사용하는 밸브입니다.
- 주로 에어 구동기기에 장착하여 사용됩니다.

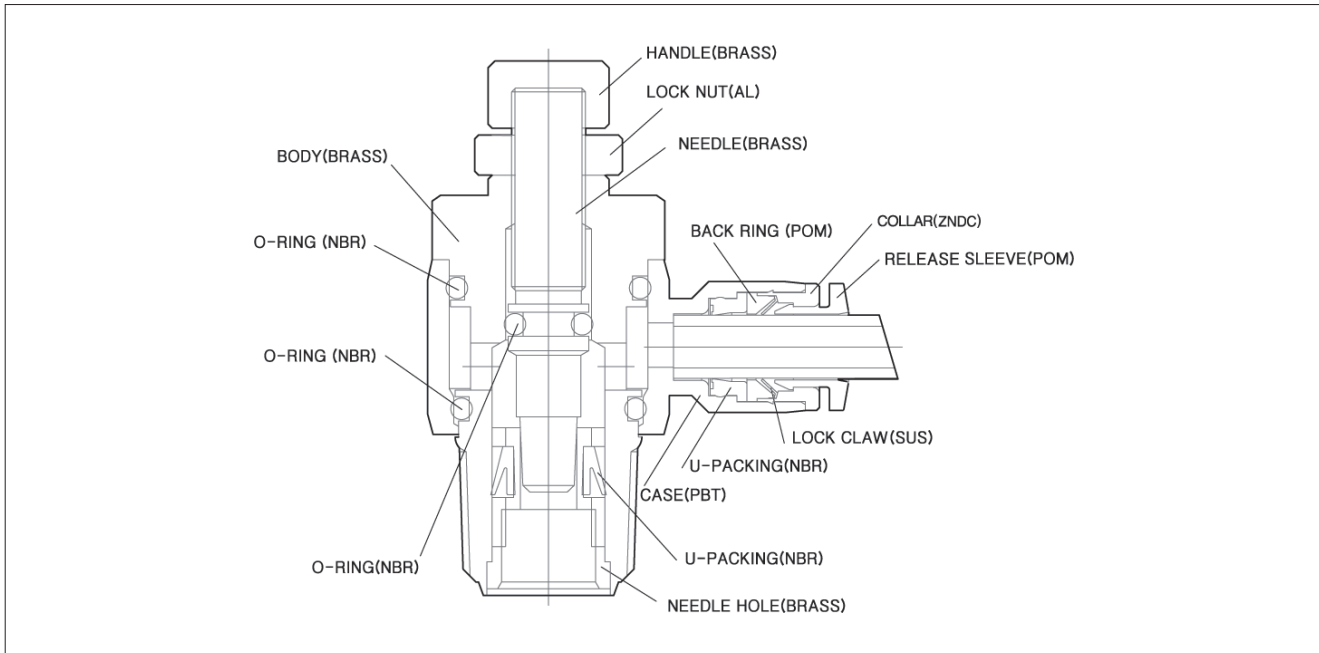
특징

- 미세한 유량조절로 유량제어가 용이합니다.
- 취부 후 본체 부분이 360°회전 가능함으로 튜브 방향, 각도를 배관에 맞게 조절하여 사용할 수 있습니다.
- 니들회전수가 10~12회전으로 증가되어 속도제어가 용이하고 일정한 속도 제어가 가능합니다.
- 장비에 부착시 차지하는 면적이 작습니다.

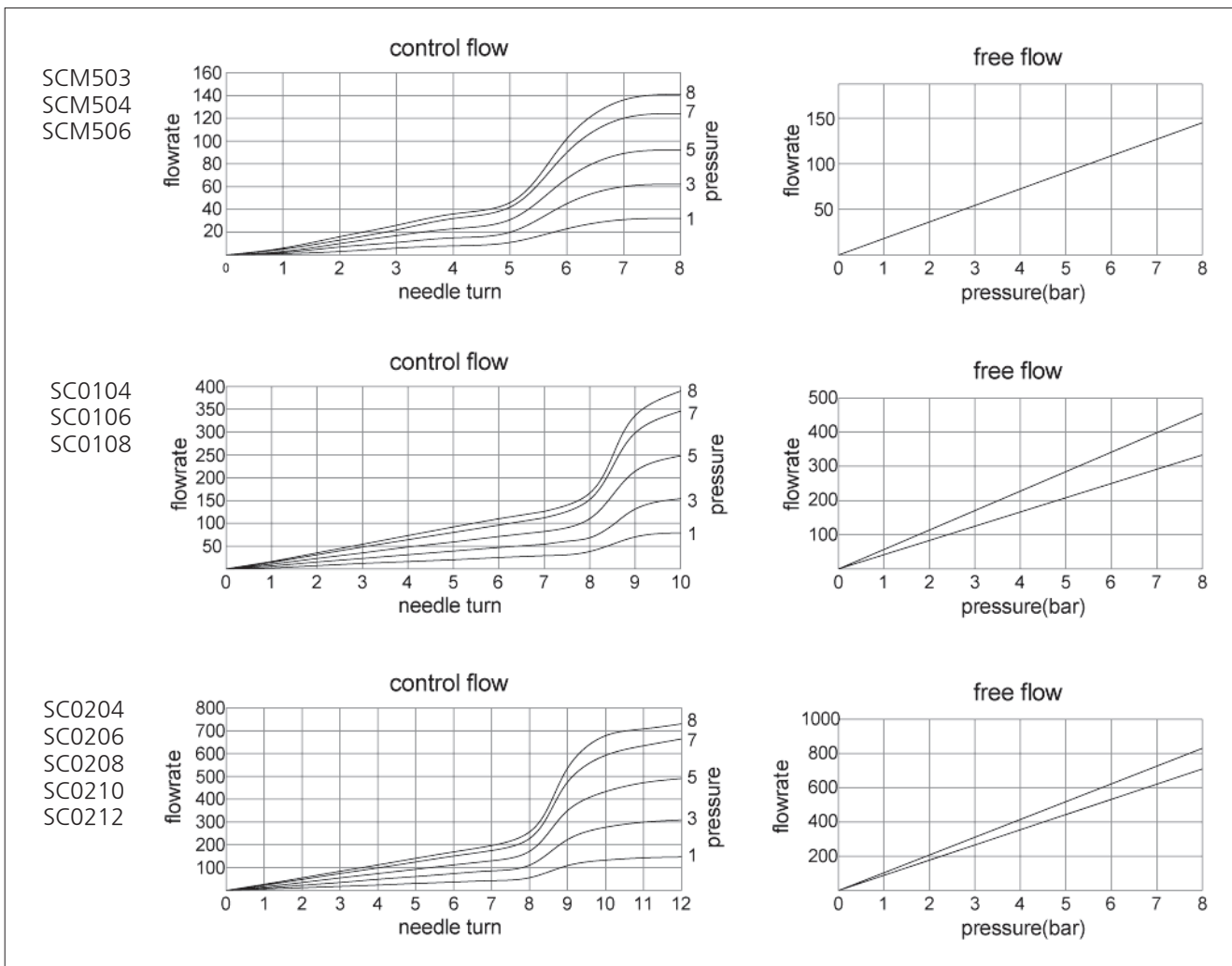
사용예



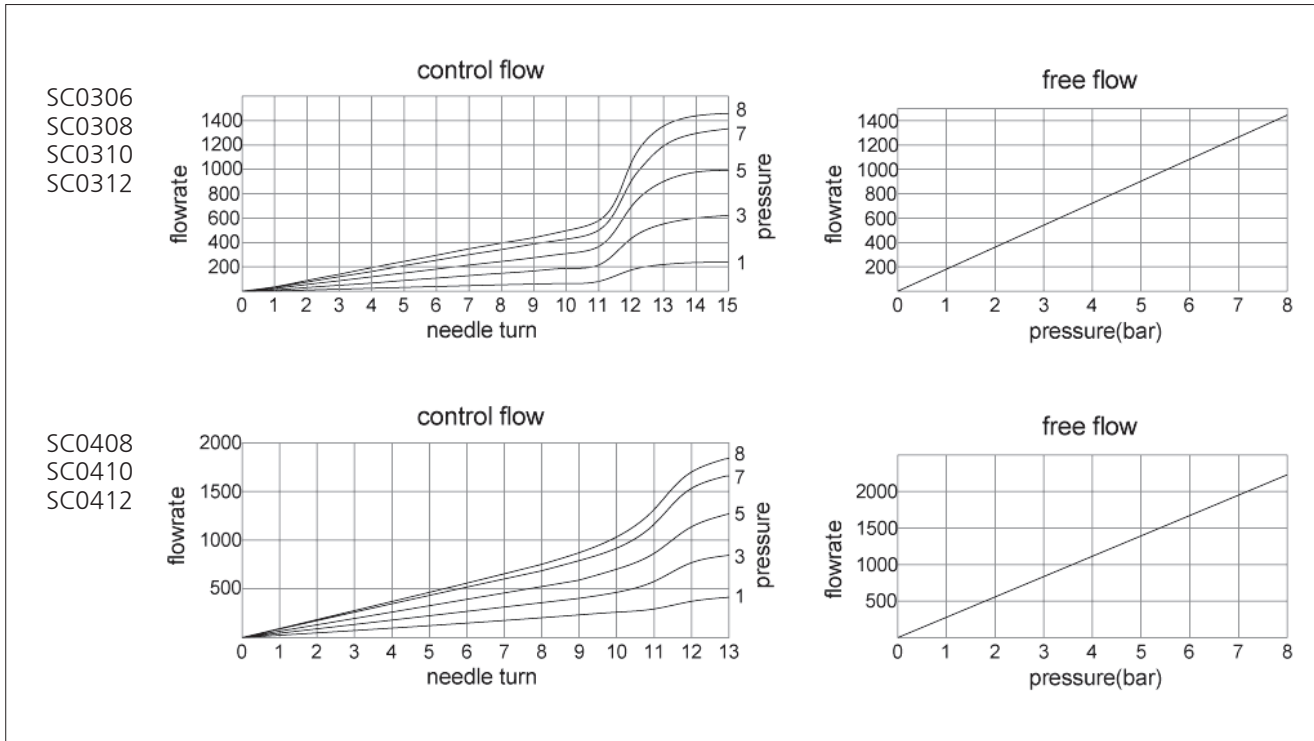
구조도



유량 그래프



유량 그래프



액세서리

원터치피팅

컴팩트
원터치피팅

투터치피팅

SC, SCS

SC-F

ASCM

KAS2000
/4000

KAS500
/600

SCPV

KHVC

KHVF

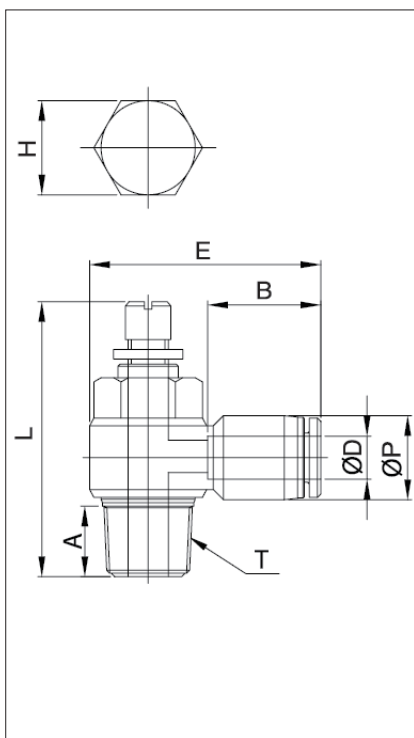
KHVV

KHVM

KHBVV

SH

외형치수도 (R(PT)나사)-SC형

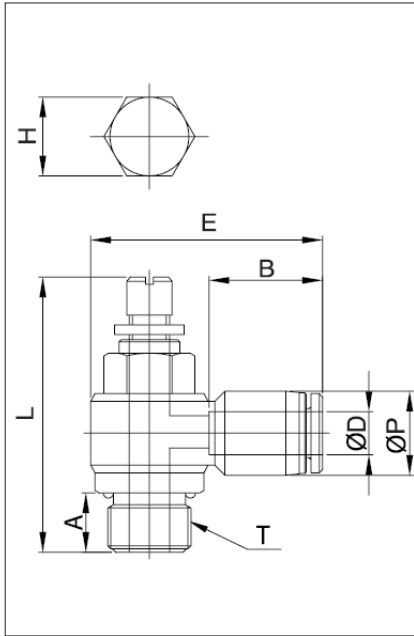


단위 : mm

모델	ØD	ØP	T	L (MIN)	L (MAX)	E	A	B	H (Hex)	중량 (g)	BOX (EA)
SCM503	3	7.8	M5X0.8P	27.2	30.2	21.4	3.6	11.1	8	7.0	50
SCM504	4	10.5	M5X0.8P	27.2	30.2	25.1	3.6	16.3	8	7.8	50
SC0104			R(PT) 1/8	34.9	40.1	30.5	8.0		11	17.8	50
SC0204	6	12.5	R(PT) 1/4	40.0	45.7	34.5	10.0	17.6	15	33.8	50
SCM506			M5X0.8P	27.2	30.2	27.8	3.6		8	8.7	50
SC0106			R(PT) 1/8	34.9	40.1	31.2	8.0		11	17.7	50
SC0206			R(PT) 1/4	40.0	45.7	35.0	10.0		15	33.7	50
SC0306	8	14.5	R(PT) 3/8	46.7	55.0	38.7	11.0	18.7	19	63.7	25
SC0406			R(PT) 1/2	53.0	60.2	44.9	14.0		24	102.7	25
SC0108			R(PT) 1/8	34.9	40.1	33.0	8.0		11	19.7	50
SC0208			R(PT) 1/4	40.0	45.7	36.8	10.0		15	34.7	50
SC0308			R(PT) 3/8	46.7	55.0	40.1	11.0		19	64.7	25
SC0408			R(PT) 1/2	53.0	60.2	45.8	14.0		24	103.7	20
SC0110	10	17.5	R(PT) 1/8	34.9	40.1	35.9	8.0	19.6	11	21.2	25
SC0210			R(PT) 1/4	40.0	45.7	38.8	10.0		15	37.2	25
SC0310			R(PT) 3/8	46.7	55.0	42.2	11.0		19	67.2	25
SC0410			R(PT) 1/2	53.0	60.2	47.5	14.0		24	104.2	20
SC0212	12	20.5	R(PT) 1/4	40.0	45.7	40.8	10.0	21.9	15	40.1	25
SC0312			R(PT) 3/8	46.7	55.0	45.9	11.0		19	70.1	25
SC0412			R(PT) 1/2	53.0	60.2	50.1	14.0		24	107.1	20

외형치수도 (G나사)-SC형

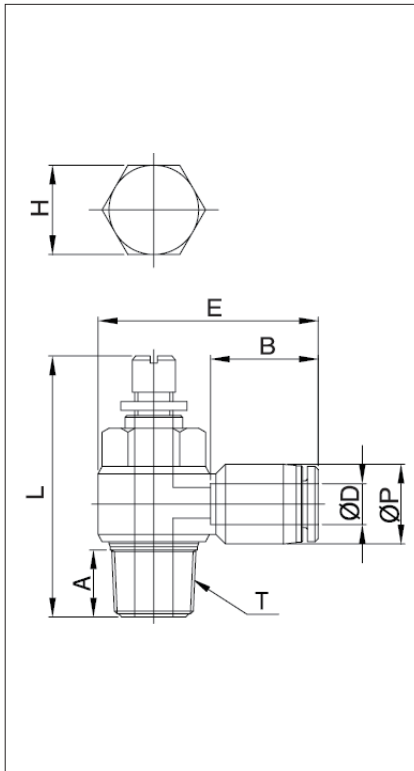
단위 : mm



모델	ØD	ØP	T	L (MIN)	L (MAX)	E	A	B	H (Hex)	중량 (g)	BOX (EA)
SCG0104	4	10.5	G 1/8	34.9	40.1	30.5	6.0	16.3	8	18.8	50
SCG0204			G 1/4	40.0	45.7	34.5	8.0		12	33.8	50
SCG0106	6	12.5	G 1/8	34.9	40.1	31.2	6.0	17.6	8	18.7	50
SCG0206			G 1/4	40.0	45.7	35.0	8.0		12	34.7	50
SCG0306			G 3/8	46.7	55.0	38.7	8.0		14	61.7	25
SCG0406			G 1/2	53.0	60.2	44.9	9.0		19	95.7	25
SCG0108	8	14.5	G 1/8	34.9	40.1	33.0	6.0	18.7	8	19.7	50
SCG0208			G 1/4	40.0	45.7	36.8	8.0		12	35.7	50
SCG0308			G 3/8	46.7	55.0	40.1	8.0		14	62.7	25
SCG0408			G 1/2	53.0	60.2	45.8	9.0		19	96.7	20
SCG0110	10	17.5	G 1/8	34.9	40.1	35.9	6.0	19.6	8	21.2	25
SCG0210			G 1/4	40.0	45.7	38.8	8.0		12	37.2	25
SCG0310			G 3/8	46.7	55.0	42.2	8.0		14	64.2	25
SCG0410			G 1/2	53.0	60.2	47.5	9.0		19	97.2	20
SCG0212	12	20.5	G 1/4	40.0	45.7	40.8	8.0	21.9	12	38.1	25
SCG0312			G 3/8	46.7	55.0	45.9	8.0		14	70.1	25
SCG0412			G 1/2	53.0	60.2	50.1	9.0		19	104.1	20

외형치수도 (NPT나사)-SC형

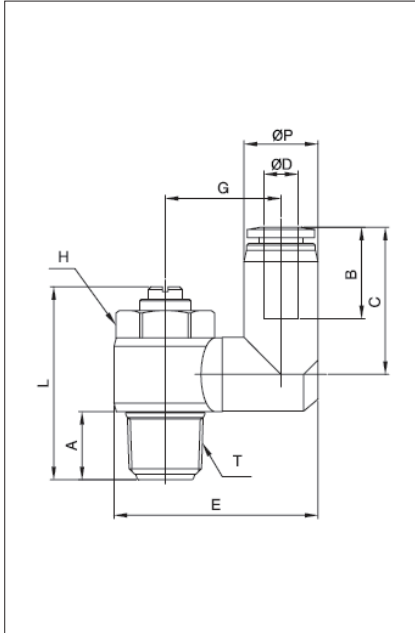
단위 : mm



모델	ØD	ØP	T	L (MIN)	L (MAX)	E	A	B	H (Hex)	중량 (g)	BOX (EA)
SCU1/8	1/8	7.6	UNF10/32	27.2	30.2	21.5	3.6	11.1	5/16	8.0	50
SCU5/32	5/32	10.5	UNF10/32	27.2	30.2	25.1	3.6	16.3	5/16	9.8	50
SCN15/32			NPT 1/8	34.9	40.1	30.5	8.0		7/16	18.8	50
SCN25/32			NPT 1/4	40.0	45.7	34.5	10.0		19/32	34.8	50
SCU3/16	3/16	11.5	UNF 10/32	27.2	30.2	26.6	3.6	16.8	5/16	9.7	50
SCN13/16			NPT 1/8	34.9	40.1	31.4	8.0		7/16	18.7	50
SCN23/16			NPT 1/4	40.0	45.7	35.3	10.0		19/32	34.7	50
SCN33/16			NPT 3/8	46.7	55.0	39.1	11.0		3/4	65.7	25
SCU1/4	1/4	12.5	UNF10/32	27.2	30.2	28.7	3.6	17.4	5/16	10.7	50
SCN11/4			NPT 1/8	34.9	40.1	32.0	8.0		7/16	19.7	50
SCN21/4			NPT 1/4	40.0	45.7	35.9	10.0		19/32	35.7	50
SCN31/4			NPT 3/8	46.7	55.0	39.7	11.0		3/4	66.7	25
SCN15/16	5/16	14.5	NPT 1/8	34.9	40.1	33.0	8.0	18.7	7/16	21.7	50
SCN25/16			NPT 1/4	40.0	45.7	36.8	10.0		19/32	37.7	50
SCN35/16			NPT 3/8	46.7	55.0	40.1	11.0		3/4	69.7	25
SCN45/16			NPT 1/2	53.0	60.2	45.8	14.0		15/16	103.7	25
SCN23/8	3/8	17.5	NPT 1/4	40.0	45.7	37.5	10.0	20.2	19/32	39.2	25
SCN33/8			NPT 3/8	46.7	55.0	42.1	11.0		3/4	70.2	25
SCN43/8			NPT 1/2	53.0	60.2	47.3	14.0		15/16	109.2	20
SCN31/2	1/2	21.0	NPT 3/8	46.7	55.0	45.1	11.0	22.0	3/4	74.0	25
SCN41/2			NPT 1/2	53.0	60.2	50.5	14.0		15/16	119.0	20

외형치수도 (R(PT)나사)-SCS형

단위 : mm



모델	ØD	ØP	T	L (MIN)	L (MAX)	H (Hex)	A	B	C	E	G	BOX (EA)
SCSM504	4	10.5	M5X0.8P	27.2	30.2	8.0	3.6	16.3	20.5	22.7	12.3	50
SCS0104			R(PT) 1/8	34.9	40.1	11.0	8.0		20.5	26.5	14.3	50
SCS0204			R(PT) 1/4	40.0	45.7	15.0	10.0		20.5	26.5	14.3	50
SCSM506	6	12.5	M5X0.8P	27.2	30.2	8.0	3.6	17.6	22.5	24.7	13.3	50
SCS0106			R(PT) 1/8	34.9	40.1	11.0	8.0		24.1	28.5	15.0	50
SCS0206			R(PT) 1/4	40.0	45.7	15.0	10.0		26.0	36.0	20.3	50
SCS0306			R(PT) 3/8	46.7	55.0	19.0	11.0		26.0	41.3	23.3	25
SCS0108	8	14.5	R(PT) 1/8	34.9	40.1	11.0	8.0	18.7	25.4	30.6	16.2	50
SCS0208			R(PT) 1/4	40.0	45.7	15.0	10.0		28.8	36.0	19.3	50
SCS0308			R(PT) 3/8	46.7	55.0	19.0	11.0		29.8	43.6	24.6	25
SCS0408			R(PT) 1/2	53.0	60.2	24.0	14.0		29.8	48.4	26.6	20
SCS0210	10	17.5	R(PT) 1/4	40.0	45.7	15.0	10.0	19.6	30.7	38.2	20.3	25
SCS0310			R(PT) 3/8	46.7	55.0	19.0	11.0		31.7	44.9	24.6	25
SCS0410			R(PT) 1/2	53.0	60.2	24.0	14.0		33.2	49.8	26.7	20
SCS0212	12	20.5	R(PT) 1/4	40.0	45.7	15.0	10.0	21.9	33.4	41.2	21.8	25
SCS0312			R(PT) 3/8	46.7	55.0	19.0	11.0		34.4	46.4	24.6	25
SCS0412			R(PT) 1/2	53.0	60.2	24.0	14.0		35.9	51.3	26.7	20

액서세리

원터치피팅

컴팩트 원터치피팅

투터치피팅

SC, SCS

SC-F

ASCM

KAS2000 /4000

KAS500 /600

SCPV

KHVC

KHVF

KHVV

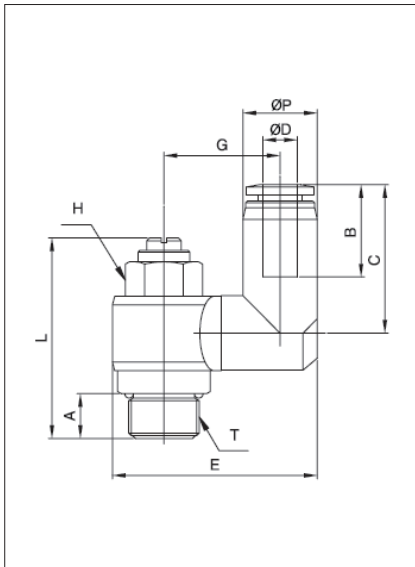
KHVM

KHBVV

SH

외형치수도 (G나사)-SCS형

단위 : mm



모델	ØD	ØP	T	L (MIN)	L (MAX)	H (Hex)	A	B	C	E	G	BOX (EA)
SCSG0104	4	10.5	G 1/8	34.9	40.1	8.0	6.0	16.3	20.5	26.5	14.3	50
SCSG0204			G 1/4	40.0	45.7	12.0	8.0		20.5	26.5	14.3	50
SCSG0106	6	12.5	G 1/8	34.9	40.1	8.0	6.0	17.6	24.1	28.5	15.0	50
SCSG0206			G 1/4	40.0	45.7	12.0	8.0		26.0	36.0	20.3	50
SCSG0306			G 3/8	46.7	55.0	14.0	8.0		26.0	41.3	23.3	25
SCSG0108	8	14.5	G 1/8	34.9	40.1	8.0	6.0	18.7	25.4	30.6	16.2	50
SCSG0208			G 1/4	40.0	45.7	12.0	8.0		28.8	36.0	19.3	50
SCSG0308			G 3/8	46.7	55.0	14.0	8.0		29.8	43.6	24.6	25
SCSG0408			G 1/2	53.0	60.2	17.0	9.0		29.8	48.4	26.6	20
SCSG0210	10	17.5	G 1/4	40.0	45.7	12.0	8.0	19.6	30.7	38.2	20.3	25
SCSG0310			G 3/8	46.7	55.0	14.0	8.0		31.7	44.9	24.6	25
SCSG0410			G 1/2	53.0	60.2	17.0	9.0		33.2	49.8	26.7	20
SCSG0212	12	20.5	G 1/4	40.0	45.7	12.0	8.0	21.9	33.4	41.2	21.8	25
SCSG0312			G 3/8	46.7	55.0	14.0	8.0		34.4	46.4	24.6	25
SCSG0412			G 1/2	53.0	60.2	17.0	9.0		35.9	51.3	26.7	20